



Icahn School
of Medicine at
Mount
Sinai

Virtual 18th Annual Mount Sinai Inflammatory Bowel Disease Consultant's Course

Clinical Updates and Practical Strategies

**Icahn School of Medicine
at Mount Sinai**

Course Directors

Jean-Frédéric Colombel, MD
Professor of Medicine
Director, The Susan and Leonard
Feinstein IBD Clinical Center and
The Leona M. and Harry B. Helmsley
Charitable Trust Inflammatory Bowel
Disease Center

Marla Dubinsky, MD
Professor of Pediatrics and Medicine
Chief, Pediatric Gastroenterology
and Nutrition
Co-Director, The Susan and Leonard
Feinstein IBD Clinical Center

Asher Kornbluth, MD
Clinical Professor of Medicine
The Henry D. Janowitz
Division of Gastroenterology

James F. Marion, MD
Professor of Medicine
The Henry D. Janowitz
Division of Gastroenterology
Director of Education and Outreach
The Susan and Leonard Feinstein
IBD Clinical Center

Co-Directors

Robert Hirten, MD
Assistant Professor of Medicine

Maia Kayal, MD
Assistant Professor of Medicine

Ryan Ungaro, MD
Assistant Professor of Medicine

Provided by:
The Dr. Henry D. Janowitz
Division of Gastroenterology
Department of Medicine,
Icahn School of Medicine
at Mount Sinai

Saturday, November 20, 2021
8 am – 2:30 pm EST

<https://mssm.cloud-cme.com>



Agenda

Session I

7:45 AM EST	Welcome & Introduction	
8:00	The New Kids on the Block: Ozanimod, Risankizumab, Upadacitinib	Bruce E. Sands, MD
8:15	To Treat or Not to Treat Mild Inflammatory Bowel Disease	Manasi Agrawal, MD
8:30	Treating Fatigue in IBD	Laurie Keefer, PhD
8:45	Post-SCENIC Dysplasia Management	James F. Marion, MD
9:00	Panel Q & A	
9:10	Break	

Session II

9:15	<i>The 8th Annual Lloyd F. Mayer, MD, Memorial Lectureship in Gastroenterology:</i> Positioning Medical Therapies: How I do it	David T. Rubin, MD
9:40	A Practical Guide to Drug Monitoring	Marla Dubinsky, MD
9:55	Treat to Target: An Update	Maia Kayal, MD
10:10	Incorporating Precision Medicine Into the IBD Clinic	Elizabeth A. Spencer, MD
10:25	Panel Q&A	
10:35	Break	

Session III

10:40	C. diff Management: What To Order And When To Treat	Ari Grinspan, MD
10:55	Update on COVID-19 and IBD	Ryan Ungaro, MD
11:10	Fistulizing Crohn's Disease: Medication or Operation	James George, MD
11:25	Irritable Bowel Syndrome in Inflammatory Bowel Disease	Robert Hirten, MD
11:40	Panel Q & A	

11:50-12:20 LUNCH ON OWN - Visit virtual exhibit

Session IV

12:20	A Practical Guide to The Hospitalized UC Patient	Asher Kornbluth, MD
12:35	Therapeutic Exit Strategies in IBD	Jean-Frédéric Colombel, MD
12:50	Perianal Disease: Beyond Infliximab	Serre-Yu Wong, MD, PhD
1:05	Panel Q & A	
1:15	Break	

Session V

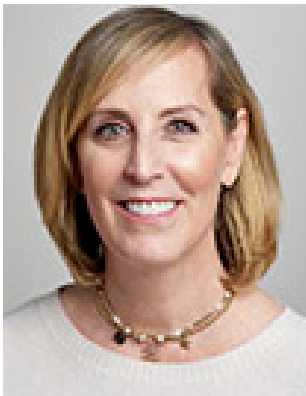
1:20	Alternative Treatments for Our IBD Patients	Adam F. Steinlauf, MD
1:35	What to Expect When They are Expecting: Pregnancy and IBD	Zoe Gottlieb, MD
1:50	Lessons Learned From a Combined IBD-Rheumatology Clinic	Bahar Moghaddam, MD
2:05	Practical Dietary Advice for IBD Patients	Laura Manning, MPH
2:20 - 2:30 PM EST	Panel Q & A - Adjournment	

Faculty

Course Directors



Jean-Frédéric Colombel, MD
Professor of Medicine
Director, The Susan and Leonard
Feinstein IBD Clinical Center and
The Leona M. and Harry B. Helmsley
Charitable Trust Inflammatory Bowel
Disease Center



Marla Dubinsky, MD
Professor of Pediatrics and Medicine
Chief, Pediatric Gastroenterology
and Nutrition
Co-Director, The Susan and Leonard
Feinstein IBD Clinical Center



Asher Kornbluth, MD
Clinical Professor of Medicine
The Henry D. Janowitz
Division of Gastroenterology



James F. Marion, MD
Professor of Medicine
The Henry D. Janowitz
Division of Gastroenterology
Director of Education and Outreach
The Susan and Leonard Feinstein
IBD Clinical Center

Co-Directors

Robert Hirten, MD
Assistant Professor of Medicine

Maia Kayal, MD
Assistant Professor of Medicine

Ryan Ungaro, MD, MS
Assistant Professor of Medicine

Guest Faculty

David T. Rubin, MD
Joseph B. Kirsner Professor of Medicine
at the University of Chicago,
Section Chief, Gastroenterology,
Hepatology and Nutrition
Co-Director of the Digestive Diseases Center
Chicago, IL

Faculty

Manasi Agrawal, MD
Assistant Professor of Medicine

James George, MD
Clinical Instructor of Medicine

Zoe Gottlieb, MD
Assistant Professor of Medicine

Ari Grinspan, MD
Associate Professor of Medicine
Director of Fecal Microbiota Transplantation

Laurie Keefer, PhD
Professor of Medicine

Laura Manning, MPH, RDN, CDN
Clinical Nutrition Coordinator

Bahar Moghaddam, MD
Assistant Professor of Medicine

Bruce E. Sands, MD
Dr. Burrill B. Crohn Professor of Medicine
Chief of The Dr. Henry D. Janowitz
Division of Gastroenterology

Elizabeth A. Spencer, MD
Assistant Professor of Pediatrics

Adam F. Steinlauf, MD
Associate Professor of Medicine

Serre-Yu Wong, MD, PhD
Instructor of Medicine

Program Information

The Mount Sinai Inflammatory Bowel Diseases Consultant's Course will provide an in-depth review of strategies for participants to better diagnose, classify and achieve remission in patients with Crohn's disease and ulcerative colitis. State-of-the-art lectures will be given by expert faculty on optimizing therapies, the treatment of fistula, epidemiology of IBD and challenging clinical scenarios such as cancer prevention in colitis, IBD in pregnant and nursing mothers. This year's course will focus on the practical management of IBD.

The goal is to help IBD caregivers and physicians meet the needs of our IBD patients by addressing sub-optimal disease control, preventable disease complications, and potential negative consequences of therapy such as serious infections and cancer.

The Icahn School of Medicine at Mount Sinai course directors have selected experts in this field to lend their expertise to highlight the latest advances in the treatment to a disease that affects about 3.0 million people in the US. There will be many opportunities for audience interaction and participation at this year's course.

Program Objectives

At the conclusion of the conference, participants will be able to:

- Describe the use and adverse events associated with ozanimod, risankizumab, and upadacitinib.
- Describe treatment options for special populations including pregnant patients, patients with joint related complications, and patients with penetrating sequaleae.
- Describe the evidence for diet based interventions in the management of inflammatory bowel disease.
- Describe appropriate implementation of therapeutic drug monitoring and treat-to-target approaches in clinical practice.
- Identify the rationale for positioning of biologic therapies for Crohn's disease and ulcerative colitis.

Who Should Attend Virtually

Gastroenterologists, Colorectal Surgeons, Primary Care Physicians, PAs and other healthcare professionals caring for patients with IBD or colorectal cancer.

Accreditation Statement

The Icahn School of Medicine at Mount Sinai is accredited by the Accreditation Council for Continuing Medical Education to provide continuing medical education for physicians.

Credit Designation

The Icahn School of Medicine at Mount Sinai designates this live activity for a maximum of 5.5 *AMA PRA Category 1 Credit(s)*TM. Physicians should claim only the credit commensurate with the extent of their participation in the activity.

Verification of Attendance

Will be provided to all professionals.

For additional conference information, please call the **Office of CME: (212) 731-7950** or **email: cme@mssm.edu**.

Registration

Complimentary, register online at <https:mssm.cloud-cme.com>

Cancellation Policy

All cancellation requests must be emailed to the CME office at cme@mssm.edu by November 15, 2021.

FACULTY DISCLOSURE: It is the policy of Icahn School of Medicine at Mount Sinai to ensure objectivity, balance, independence, transparency, and scientific rigor in all CME-sponsored educational activities. All faculty participating in the planning or implementation of a sponsored activity are expected to disclose to the audience any relevant financial relationships and to assist in resolving any conflict of interest that may arise from the relationship. Presenters must also make a meaningful disclosure to the audience of their discussions of unlabeled or unapproved drugs or devices. This information will be available as part of the course materials.